

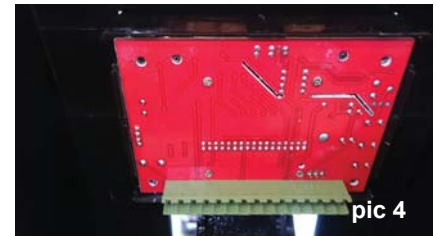
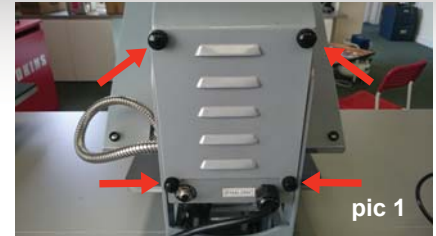
How to change a push button digital controller

STUDIO 'EZ'-AUTO CLAM

Replacement/ removal of a digital controller

N.B. Before undertaking any work, switch off the power supply to the machine and unplug the machine from the electricity supply

1. Remove rear cover of press by unscrewing the four retaining thumb screws (pic 1)
2. Remove the green connector by pulling outwards (pic 2)
3. Remove the black cover by unscrewing the four retaining screws (pic 3)
4. (pic 4) shows the circuit board after the black cover has been removed
5. Remove the circuit board from the case (pic 5)
6. (pic 6) shows the circuit board after removal
7. Remove the button covers by pulling upwards (pic 7)



Re-installation of a replacement digital controller

1. Installation is a reversal of removal, taking care to align the black buttons on the controller with the corresponding holes in the case, as (pic 8)