

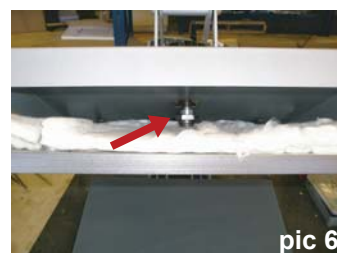
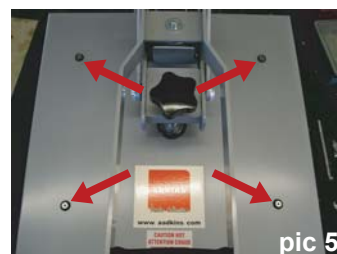
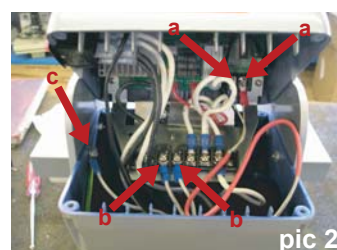


How to change a heat plate STUDIO AUTO CLAM SENIOR/ JUNIOR PRESS

Replacement/ removal of a heat plate

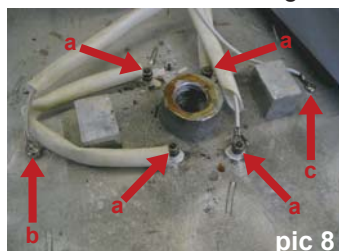
N.B. Before undertaking any work, switch off the power supply to the machine and unplug the machine from the electricity supply

1. Separate electrical box by unscrewing 4 screws (pic 1 & inset)
2. Lift the top half of electrical box upwards and pivot towards front of press (pic 2)
3. With a screwdriver remove probe wires (pic 2 arrow-a), element wires (pic 2 arrow-b) and earth wire (pic 2 arrow-c), taking note of the connections for future reference when reinstalling
4. Lift top half of electrical box up and allow it to hang down the back of the press by attached wires
5. Using a 30 mm spanner remove nut from cable gland and pull wires out from hole in electrical box (pic 3)
6. With a 14 mm spanner remove bolt from heat plate (pic 4)
7. Remove screws securing heat plate cover (pic 5)
8. Lift heat plate cover from front and using a 32 mm spanner, remove hex bolt in an anticlockwise direction (pic 6)
9. Put arm/ handle into the up position, leaving heat plate on silicone pad (pic 7)
10. Remove heat plate insulation material
11. Using a 7 mm spanner remove heat plate wires (pic 8 arrow-a), taking note of the connections for future reference when reinstalling
12. Using a 10 mm spanner, unlock the nut holding probe in place (pic 8 arrow-b), then using a screwdriver remove earth wire (pic 8 arrow-c)
13. Lift heat plate clear of heat press



Re-installation of replacement heat plate

1. Installation is a reversal of removal
- N.B.** When refitting hex bolt into heat plate, apply a small amount of thread locking compound to the top of the nut



If after following this technical support document you require any further assistance, please open a support ticket using this link: <https://aadkins.com/technical-support/> and a member of our technical team will contact you