

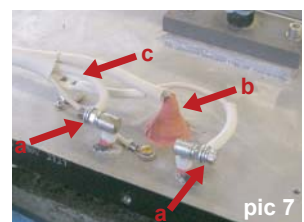
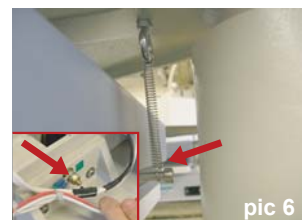
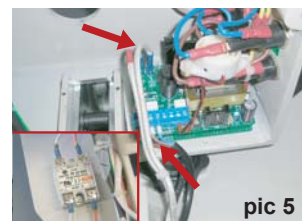
How to change a heat plate loom

BETA MAXI/ MINI (120 VOLT)

Replacement/ removal of heat plate loom

N.B. Before undertaking any work, switch off the power supply to the machine and unplug the machine from the electricity supply

1. Remove pin from pressure handwheel using 4mm punch (pic 1)
2. Unscrew handwheel anti clockwise from adjusting stud (pic 2)
3. Remove the two socket head screws (front and side) holding the instrument cover, with a 4mm allen key (pic 3)
4. Lift up instrument cover from the back of press (pic 4)
5. Remove heat plate and probe wires from controller (pic 5) and solid state relay (pic 5 inset)
6. Using a 10 mm spanner remove the earth wire from side of fabricated arm (pic 6 inset)
7. Remove heat plate spring (situated at the rear of the heat plate) (pic 6)
8. Remove yoke pin with a 10 mm punch after unscrewing grub screw (or circlip if applicable)
9. Swing heat plate around to back of press and lower down, taking care to support the weight of the heat plate
10. Feed wires and guide post out from fabricated arm and put heat plate on a soft non-abrasive surface, making sure not to damage printing surface
11. Remove dome nuts with a 10 mm spanner and lift heat plate cover
12. Remove metal cover box protecting heat plate connections by unscrewing retaining screws
13. Using a pair of pliers to support connection studs, undo nuts with an 8 mm spanner releasing wires from heat plate (pic 7 arrow-a)
14. Extract probe from heat plate (held in place by silicone) (pic 7 arrow-b) and remove thermal cut-out (pic 7 arrow-c)



Re-installation of replacement heat plate loom

1. Installation is a reversal of removal, taking care to fit new probe in place with fresh silicone

If after following this technical support document you require any further assistance, please open a support ticket using this link: <https://aadkins.com/technical-support/> and a member of our technical team will contact you