



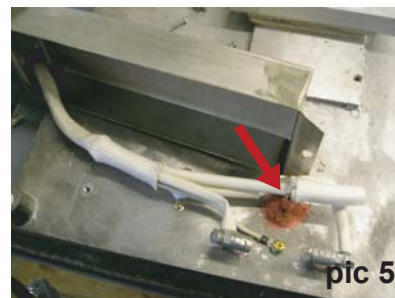
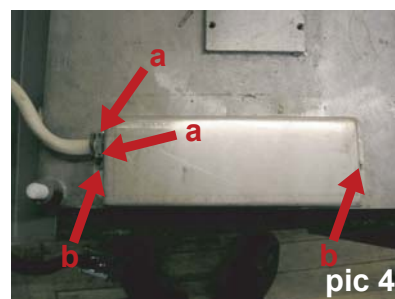
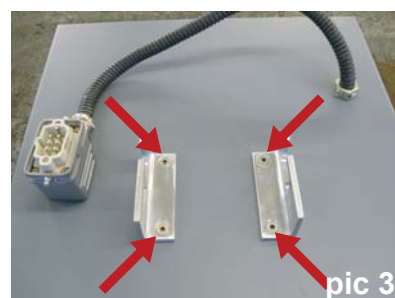
How to change a probe

OMEGA SERIES 1000-1001

Replacement/ removal of a probe

N.B. Before undertaking any work, switch off the power supply to the machine and unplug the machine from the electricity supply

1. Remove heat plate plug from socket (pic 1)
2. Turn heat plate lever anticlockwise and loosen heat plate retaining bolt (pic 2)
3. Pull heat plate towards you, then taking weight of the heat plate, carefully lower it down and away from heat press mounting bracket
4. Place heat plate onto a soft surface to work on
5. Remove the heat plate bracket from the insulation cover by unscrewing the four retaining screws (pic 3), taking note of their position for future reference when reinstalling
6. Lift off insulation cover
7. Remove clamp screws holding wire (pic 4 arrow-a) and screws holding metal box (pic 4 arrow-b) over heat plate connections
8. Pull probe out of heat plate (pic 5) which is held in place with silicone
9. Remove four screws from heat plate plug (pic 6) and then remove probe wires from plug connections (pic 7), taking note of their position for future reference when reinstalling
10. Pull probe wires through cable sleeving, allowing probe to be completely removed



Re-installation of replacement probe

1. Installation is a reversal of removal

