

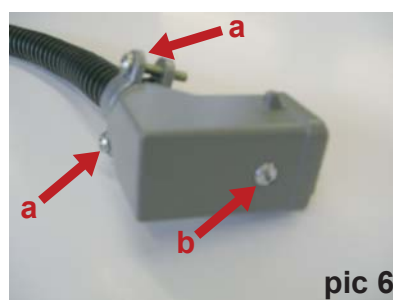
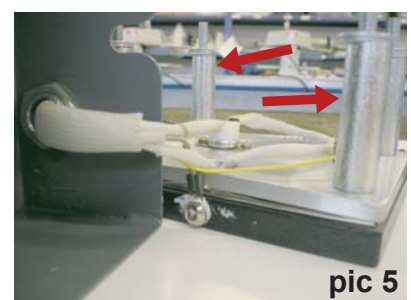
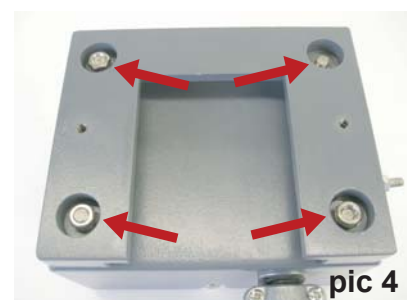
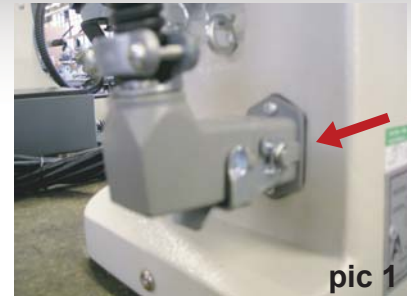


How to change a heating element

BETA CAP/ POCKET COMBO

Replacement/ removal of heating element

- N.B.** Before undertaking any work, switch off the power supply to the machine and unplug the machine from the electricity supply
1. Remove heat plate assembly plug from socket at rear of press (pic 1)
 2. Remove heat plate assembly from press by releasing plunger knob and sliding assembly forward (pic 2)
 3. Remove screws holding slide plate cover (pic 3)
 4. Remove 10 mm nuts holding slide plate (pic 4)
 5. Lift off insulation cover
 6. Remove spacers and 10 mm nuts holding clamp plate in place (pic 5), taking note of their positions for future reference when re-installing
 7. Lift off clamp plate
 8. Lift off heating element from heat plate
 9. Loosen cable clamps on cable sleeving (pic 6 arrow-a)
 10. Remove screw from plug (pic 6 arrow-b) and disconnect probe wires, taking note of the connections for future reference when re-installing
 11. Pull probe wire through cable sleeving allowing heating element to be completely removed



Re-installation of replacement heating element

1. Installation is a reversal of removal