



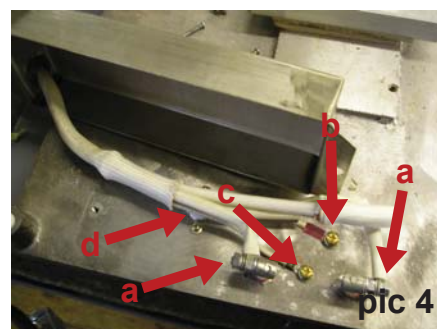
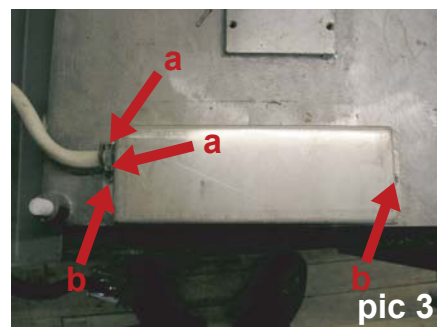
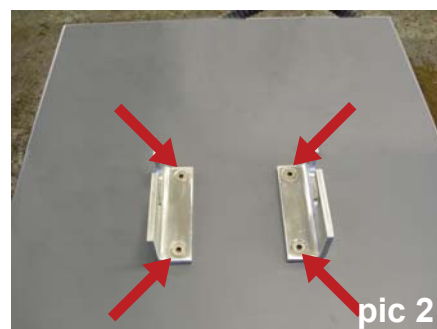
How to change a heat plate loom

OMEGA SERIES 1000-1001

Replacement/ removal of a heat plate loom

N.B. Before undertaking any work, switch off the power supply to the machine and unplug the machine from the electricity supply

1. Remove the 'P' clip from underneath the top box, by unscrewing the M4 philips pan head screw, disconnect the heat plate loom inside the top box. Remove the nut that holds the gland to the top box and remove the cables and gland. Then turn heat plate lever anticlockwise and loosen heat plate retaining bolt (pic 1)
2. Pull heat plate towards you, then taking weight of the heat plate, carefully lower it down and away from heat press mounting bracket
3. Place heat plate onto a soft surface to work on
4. Remove the heat plate bracket from the insulation cover by unscrewing the four retaining screws (pic 2), taking note of their position for future reference when reinstalling
5. Remove clamp screws holding wire (pic 3 arrow-a), then remove screws holding metal box over heat plate connections (pic 3 arrow-b)
6. Using a pair of pliers to support connection studs, undo nuts with an 8 mm spanner, to remove wires from heat plate (pic 4 arrow-a) then remove earth wire (pic 4 arrow-c)
7. Remove screw from probe wire (pic 4 arrow-b) and remove thermal cut-out (pic 4 arrow-d)



Re-installation of replacement heat plate

1. Installation is a reversal of removal