



## How to change a left and right pivot arm pair

## BETA MAXI/ MINI

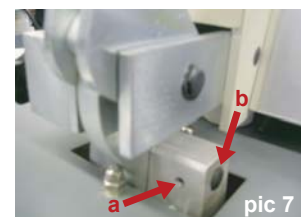
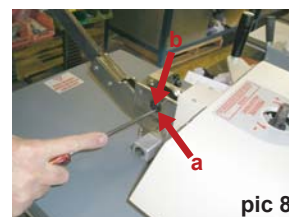
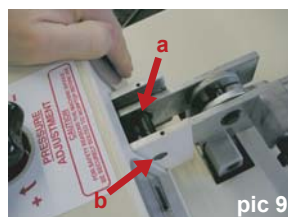
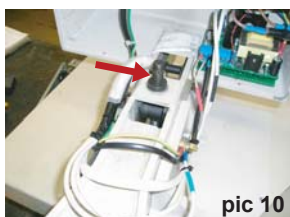
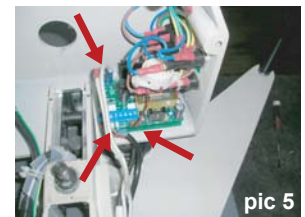
### Replacement/ removal of left and right pivot arm pair

**N.B.** Before undertaking any work, switch off the power supply to the machine and unplug the machine from the electricity supply

1. Remove pin from pressure handwheel using 4mm punch (pic 1)
2. Unscrew handwheel anticlockwise from adjusting stud (pic 2)
3. Remove the two socket head screws holding the Instrument cover with a 4mm allen Key (pic 3)
4. Lift up instrument cover from back of press (pic 4)
5. Remove the heat plate wires and probe wires from controller (including earth), taking note of all wire colours and connections for future reference when reinstalling (pic 5)
6. Remove heat plate spring, which is situated at the back of heat plate (pic 6)
7. Remove grub screw or circlip if applicable (pic 7 arrow-a) from yoke and remove yoke pin with a 10mm punch (pic 7 arrow-b)
8. Taking the weight of heat plate, swing heat plate around to back of press and lower heat plate down and feed wires and guide post out from fabricated arm. Then put heat plate down on a soft surface
9. Remove circlips from outer pin (pic 8 arrow-a)
10. Remove outer pin with 10mm punch (pic 8 arrow-b)
11. Lift complete toggle assembly from between left and right pivot arm
12. Remove circlips from inner pin (pic 9 arrow-a)
13. Remove inner pin using 10mm punch (pic 9 arrow-b)
14. Taking weight of left and right pivot arm unscrew adjusting stud out from thrust bar pin (pic 10)
15. Lift left and right pivot arm and thrust bar pin out from fabricated arm, taking note of their position for future reference when reinstalling

### Re-installation of left and right pivot arm pair

1. Installation is a reversal of removal



If after following this technical support document you require any further assistance, please open a support ticket using this link: <https://aadkins.com/technical-support/> and a member of our technical team will contact you