

Omega Series 1000-1001 Heat Press

How to add Reed Switch Collars and Battery

Replacement/Removal of Reed Switch and Battery

N.B. Before undertaking any work, switch off the power supply to the machine and unplug the machine from the electricity supply

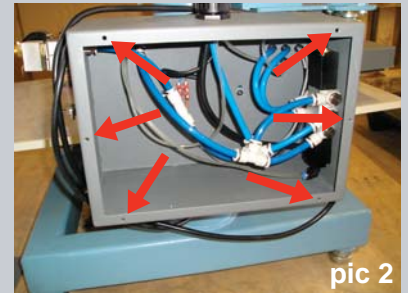
1. Using a Hex Wrench remove Reed Switch from Piston Arm assembly (pic 1) and by cutting cable ties securing wires to arm
2. Remove the six screws securing the Rear Box Lid and lift off from Rear Box (pic 2)
3. Using a small flat bladed screwdriver remove electrical connections from Connection Block (pic 3) taking note of all connections for future reference when reinstalling
4. Remove Boot Lace Ferrules from Reed Switch wire ends (pic 4)
5. Remove the 4 screws that hold the rear Trunnion to the side Cylinder (pic 5)
6. Undo the Securing Rod the Reed Switches were mounted on and slide out the Front Block (do not remove completely from the Side Cylinder). Slide on the four Collars and refit the Rod and Trunion
7. Add the Battery modification by wiring the Battery Connector th the Reed Switch wiring, i.e. Twist the two brown and red wire together and fit a Boot Lace Ferrule. Repeat for the black and blue wire and then screw the connections back into the Block (pic 3)
8. Refit the Reed Switches back onto the Rod, positioning a Collar to either side of the Reed Switch

Re-installation of replacement Reed Switch and Battery

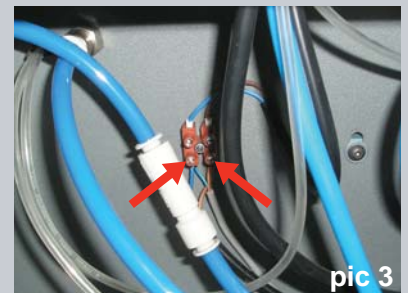
1. Position the Heat Plate over the Left Hand Table and slide the corresponding Reed Switch, i.e. the Front Switch, until the light comes on and then tighten it in that position
2. Move the two Collars (on either side) to clamp the Switch and screw them down (pic 6)
3. Repeat for the Right Hand Table



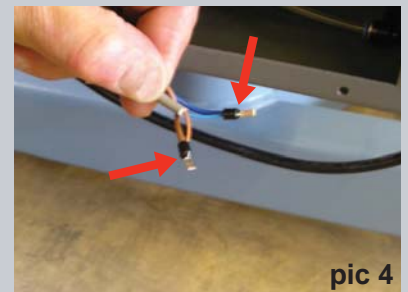
pic 1



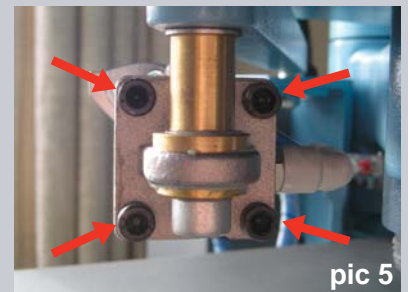
pic 2



pic 3



pic 4



pic 5



pic 6