

Quick Start Guide



A. Adkins & Sons Limited
18 Lancaster Road, Hinckley,
Leicestershire LE10 0AW
United Kingdom

Tel: [+44] (0)1455 891 291
FAX: [+44] (0)1455 633 503
email: support@aadkins.com
Web: www.aadkins.com

Contents

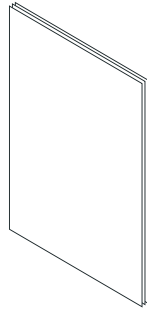
- 1** What's in the box? Page **1**
- 2** Your press Page **2**
- 3** Connecting your press Page **3**
- 4** Using your press Page **4**

1

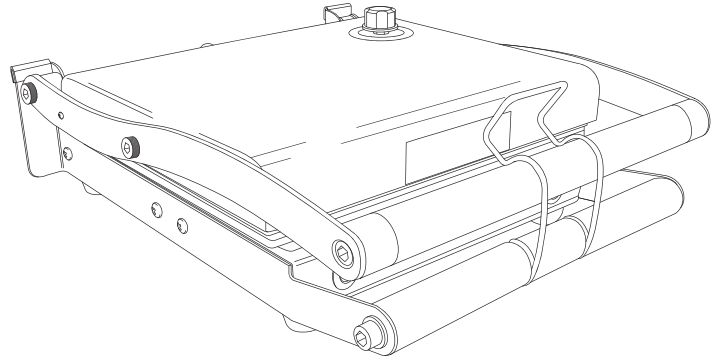
What's in the box?

Save the carton and all packing materials in case you need to ship or store your press later. After unpacking, make sure you have all parts. It is advised that you take the time to familiarize yourself with your press by looking at the labeled diagrams, located on page 6, so that you can follow the instructions in this guide.

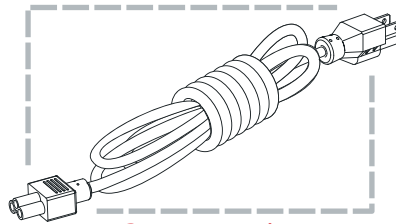
Unpack and Inspect your Press.



Quick Start Guide



Hobby Jack Press



Power Cord
(varies by locale or region)

When you receive your press, immediately unpack it and inspect for shipping damage.

- Save all packing materials.
- Check all exterior surfaces for damage.
- Open your press and inspect the heat plate for damage to components.
- It is advised that you take the time to familiarize yourself with this guide before operating your press for the first time (please pay particular attention to any warning given in this guide).
- You should read your operators manual fully before attempting to operate you Hobby Jack heat press for the first time and keep it safely within easy reach for future reference.

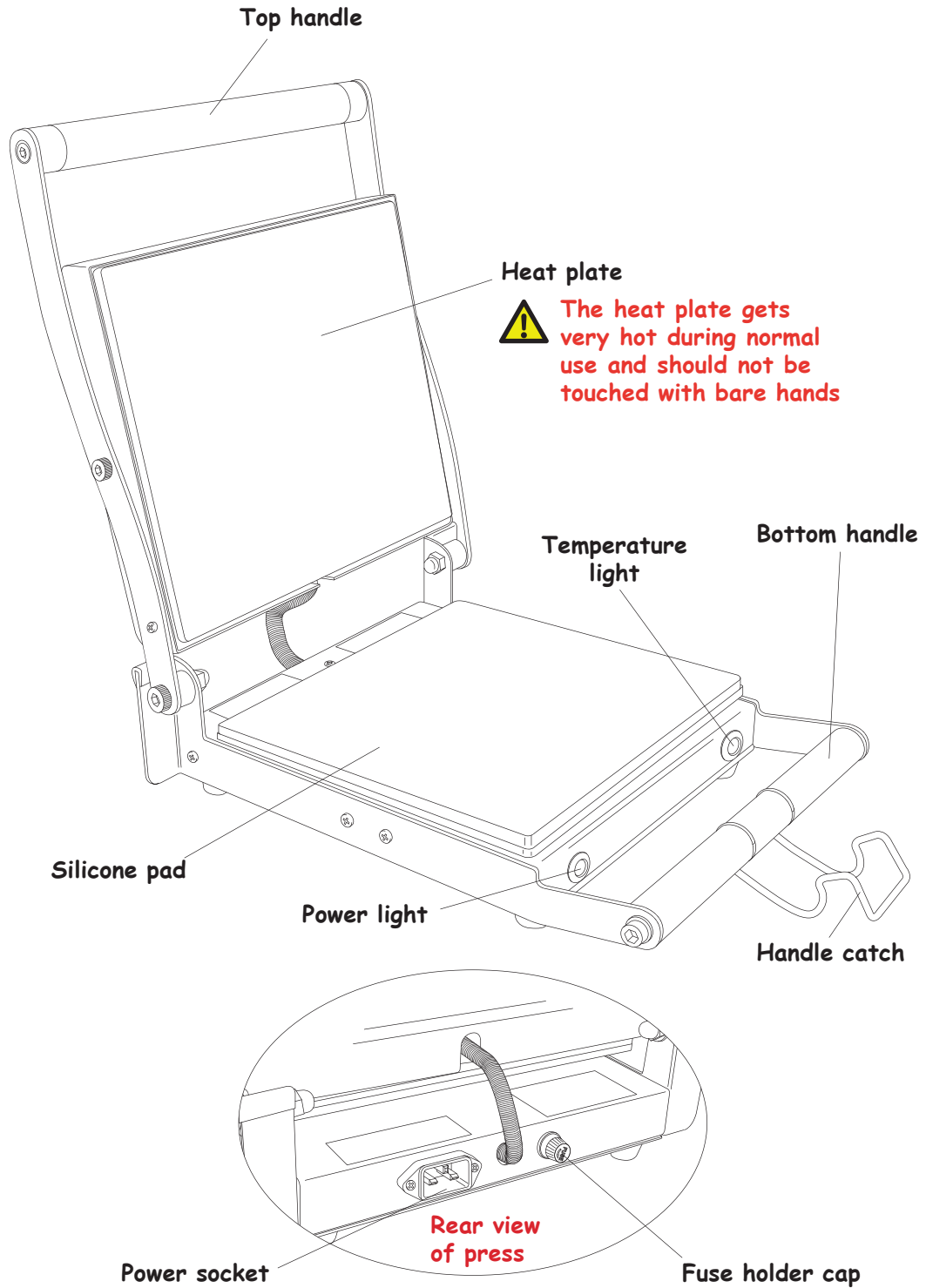
If you discover shipping damage upon inspection:

- Immediately notify the shipping company and file a damage report. A. Adkins & Sons Limited is not responsible for any damage incurred during shipment of the press and will not cover the repair of this damage under its warranty policy.
- Keep all packaging material for shipping company inspection.
- Notify A. Adkins & Sons Limited.

2

Your press

Below are diagrams outlining the various parts of your press. It is advised to familiarize yourself with these prior to using your press for the first time.

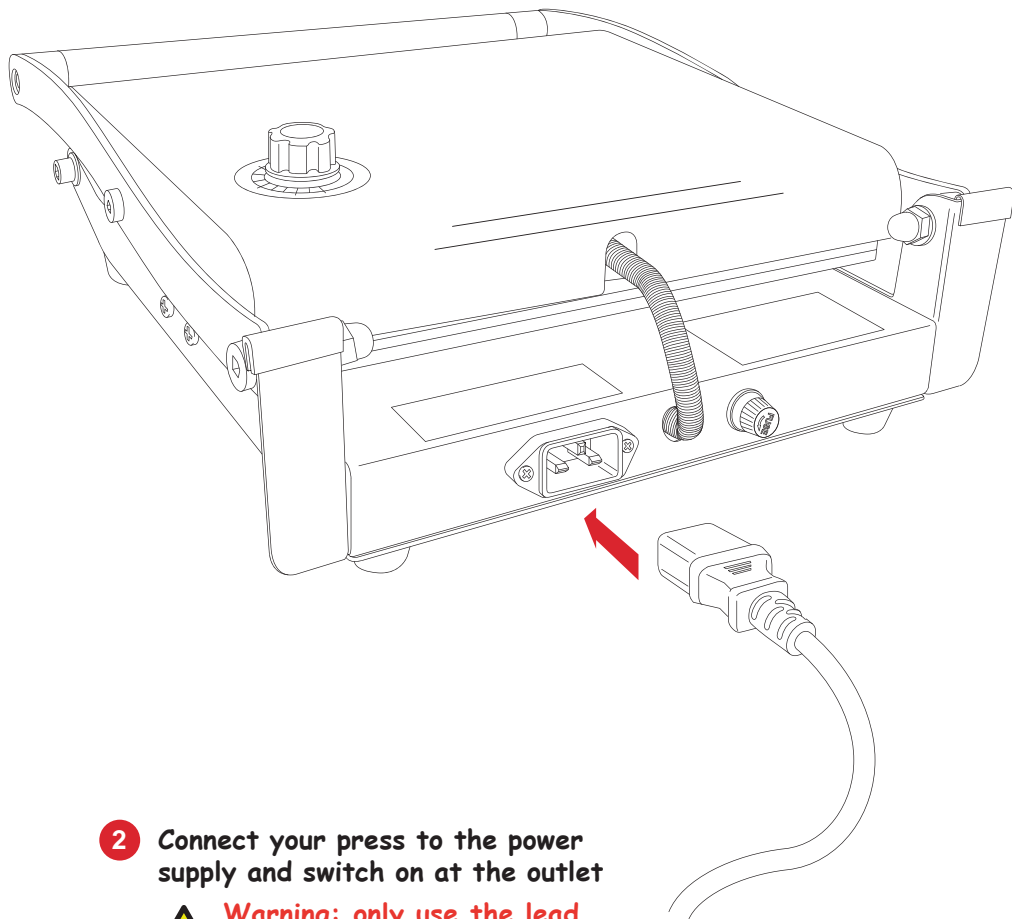


3

Connecting your press

Connecting your press to the power outlet is a simple task that requires only that you use the supplied power cord and lead. Using a lead other than the one supplied will invalidate your warranty and could lead to personal injury.

1 Gently lower the heat plate



2 Connect your press to the power supply and switch on at the outlet

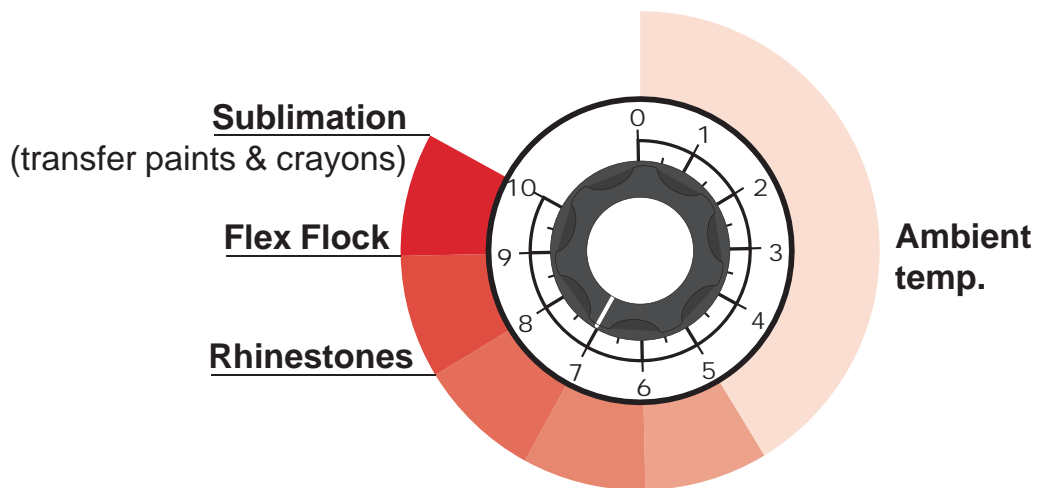


Warning: only use the lead supplied

4

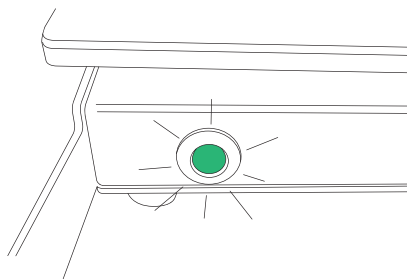
Using your press

- 1 Set the desired temperature for the type of material to be used

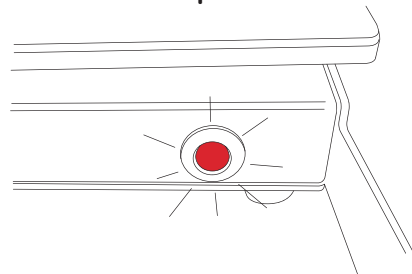


 **Max temp: 220°C (428°F)**

- 2 The green light will illuminate to indicate that your press is switched on

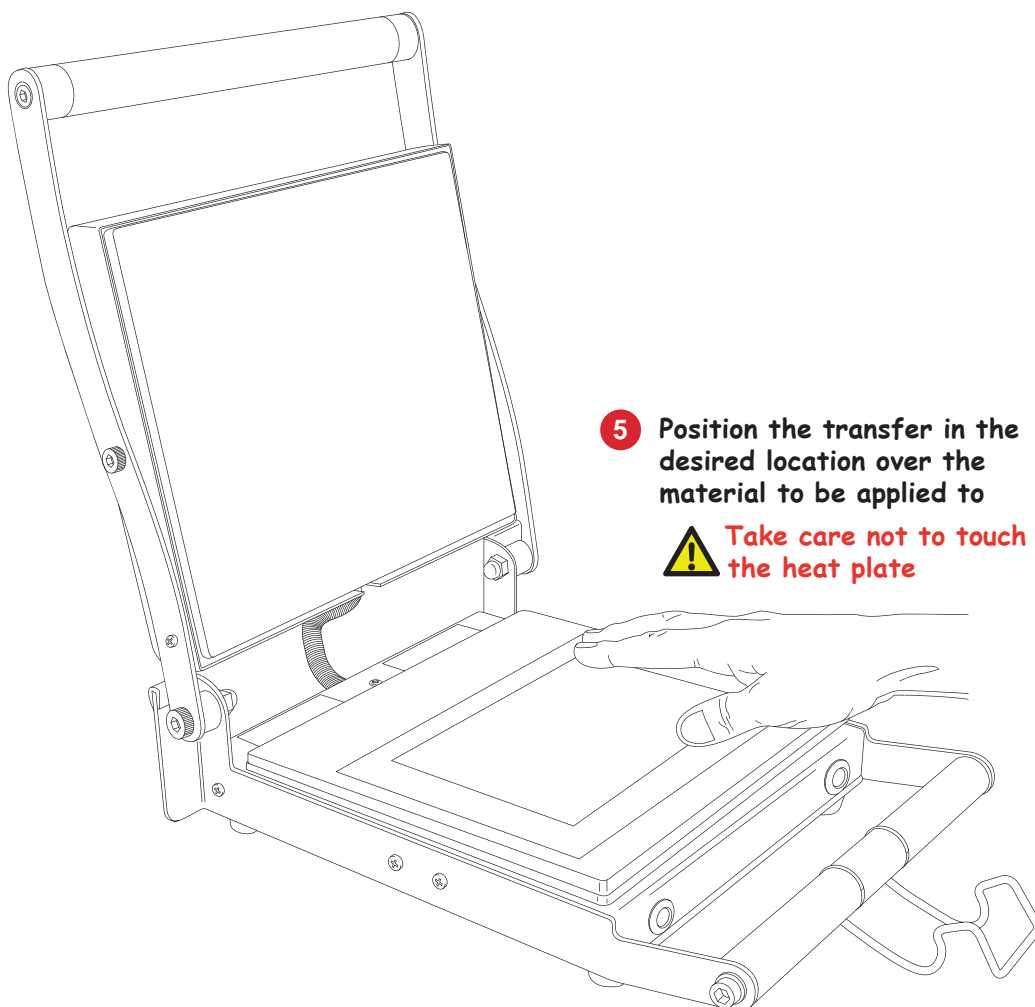
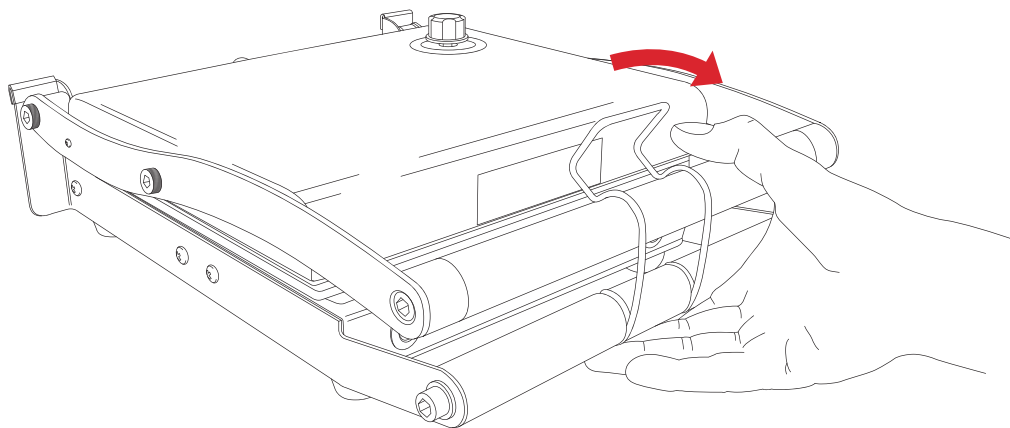


- 3 When the red light illuminates your press is heating up. The red light will go out when your press has reached temperature



Using your press (continued)

- 4** Release the handle catch to open your press

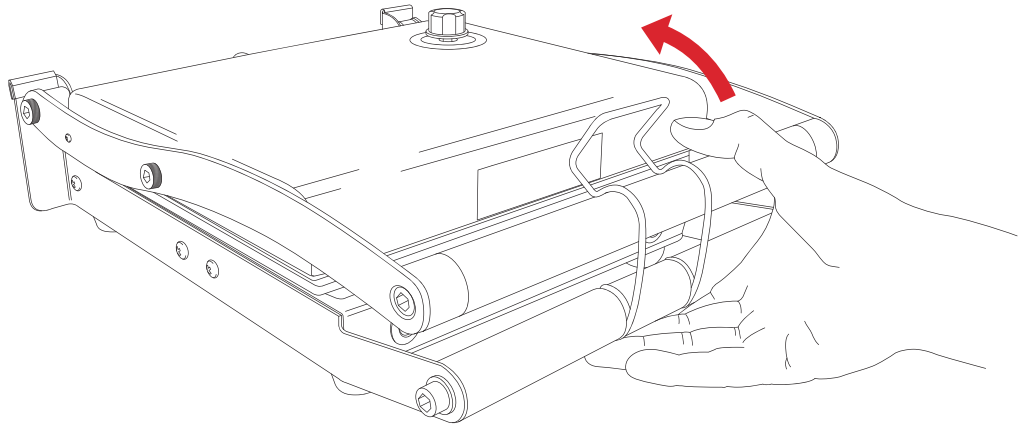


- 5** Position the transfer in the desired location over the material to be applied to

⚠ Take care not to touch the heat plate

Using your press (continued)

- 6** Lower the heat plate using both hands, taking care to close the handle catch

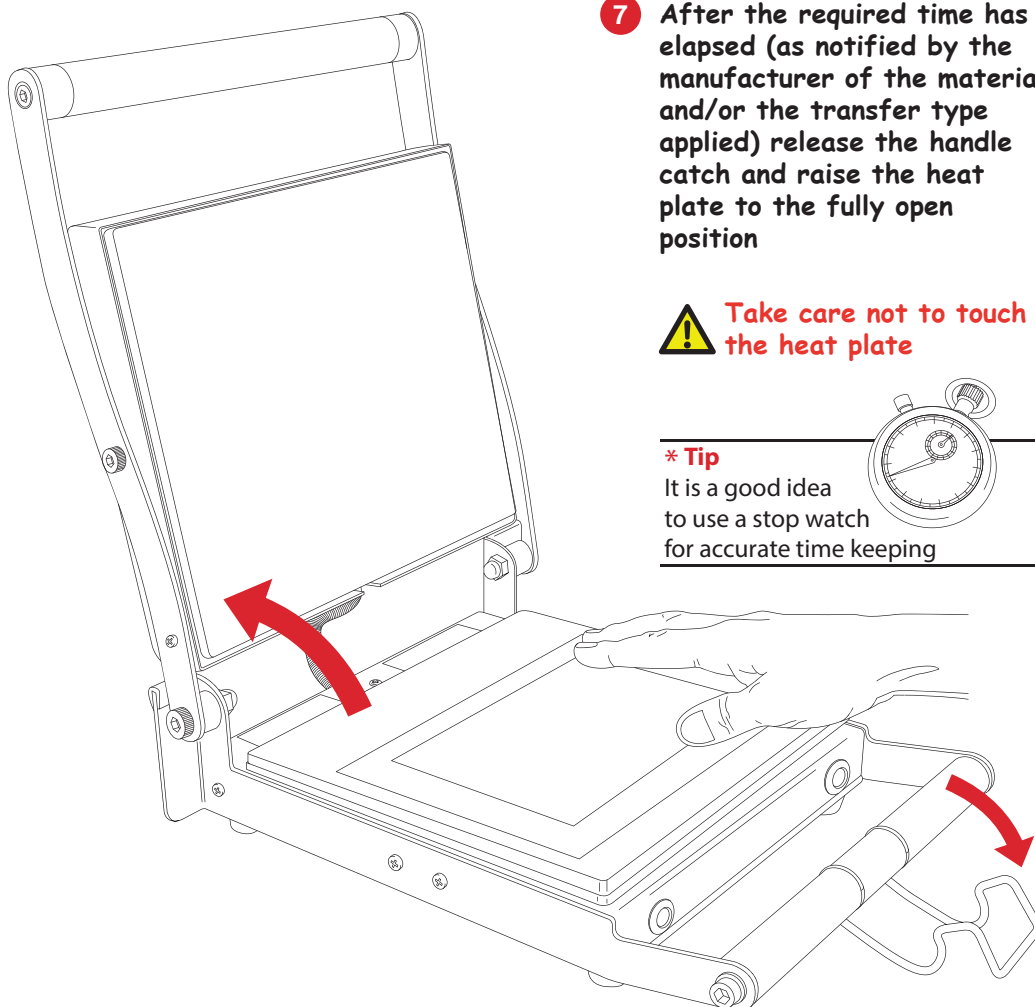
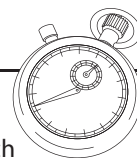


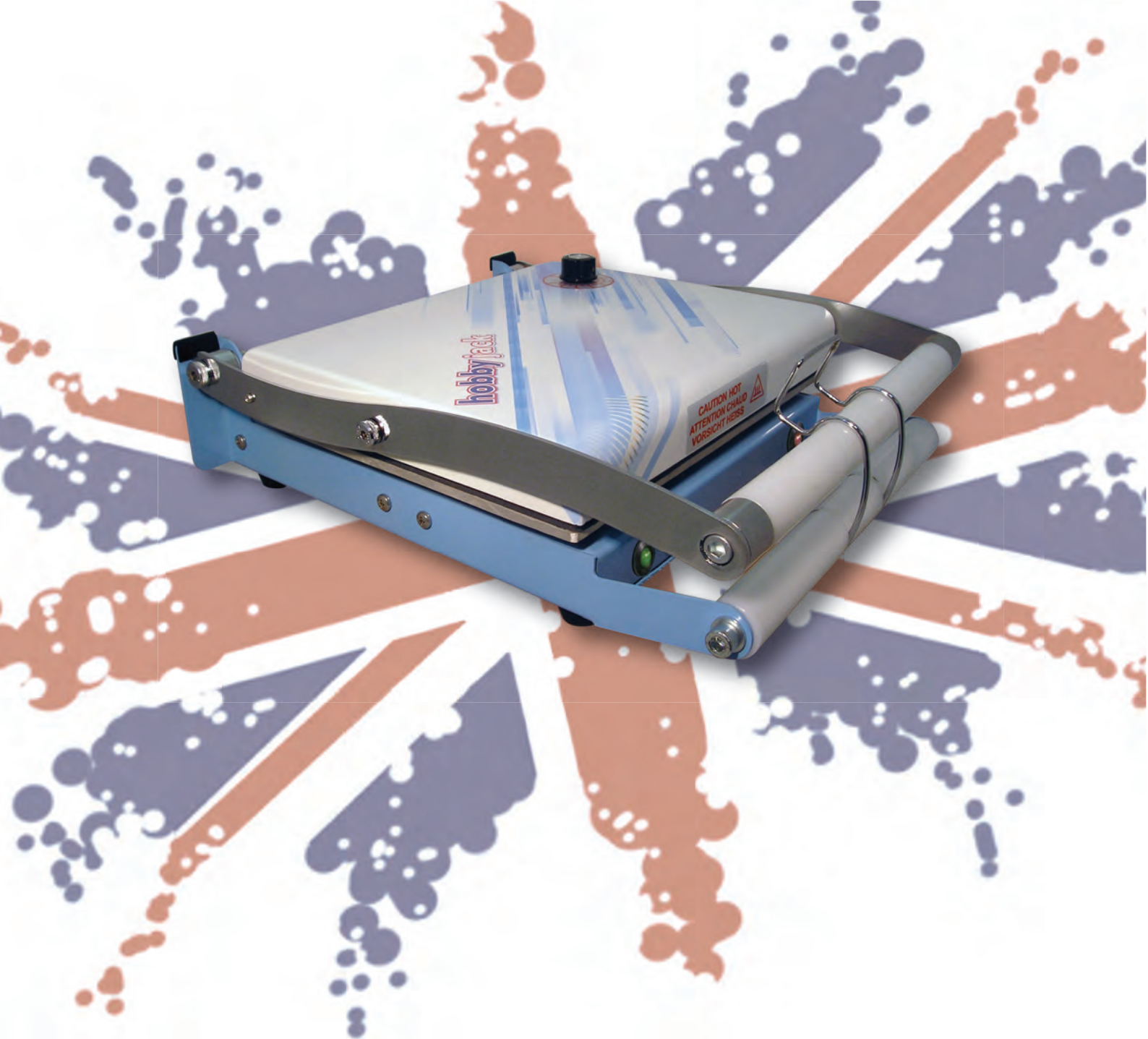
- 7** After the required time has elapsed (as notified by the manufacturer of the material and/or the transfer type applied) release the handle catch and raise the heat plate to the fully open position

⚠ Take care not to touch the heat plate

*** Tip**

It is a good idea to use a stop watch for accurate time keeping





Adkins Labelling Solutions

A. Adkins & Sons Limited
18 Lancaster Road, Hinckley, Leicestershire LE10 0AW United Kingdom